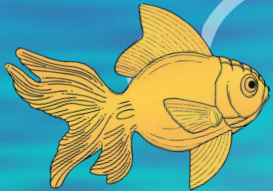




Solace Information Meeting

Fall 2022



A tropical beach scene with a yellow sun in a blue sky, a palm tree on the right, and a goldfish in the blue water on the left. A yellow beach is in the center.

Recorded Info Session:

<https://drive.google.com/file/d/1gQocldbULtQBpfdnnZe23CfW0CLp9wAv/view?usp=sharing>

Meet the Executive Team!

Chief of Membership:

Joshua Diedrich

Chief of Hospital Affiars: Nick
Blumenthal

Chief of Finance: Rishi
Kondapaneni

Chief of Fundraising: Maddie
Gubbini

Chief of Communications:
Elizabeth Solomon

Chief of Programming:
Allie Armstrong

Vice President: Siya
Bhutani

President: Adriana Kanarek



Associates

Diversity and Inclusion: **Jana Ignacio and Matt Alberto**

Membership: **Cali Hinesley and Catalina Robles**

Programming: **Talia Rumsky and Gracie Garris**

Finance: **Tej Patel and Victoria Zembruski**

Fundraising: **Joshua Gomes**





About Solace

*"We believe in the
uplifting power of a smile.
We are committed to
bringing joy and laughter
through companionship
and strive to give ourselves
to those who may be in a
weak or lonely state,
understanding that love
and compassion have
infinite healing capacity"*

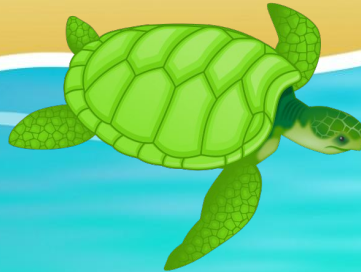


Application

Application dates:
July 19 at 12:00 AM
-> July 31st at 11:59 PM

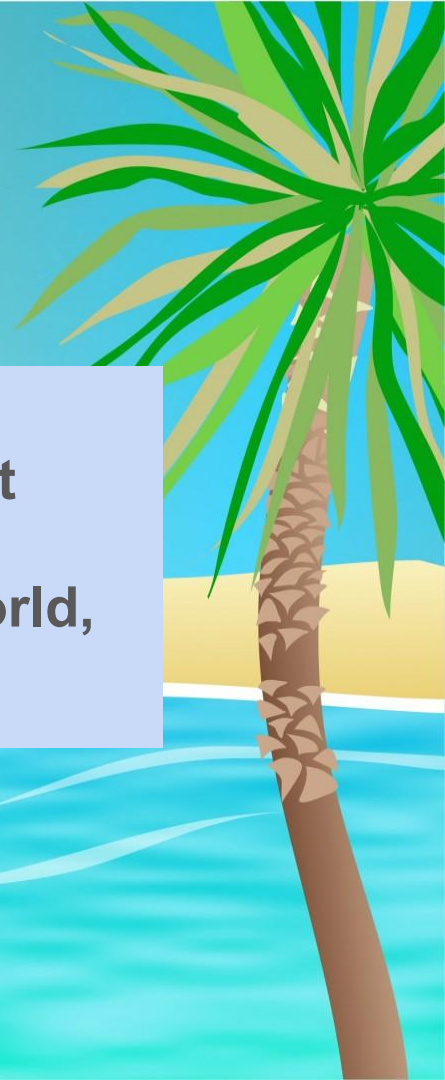
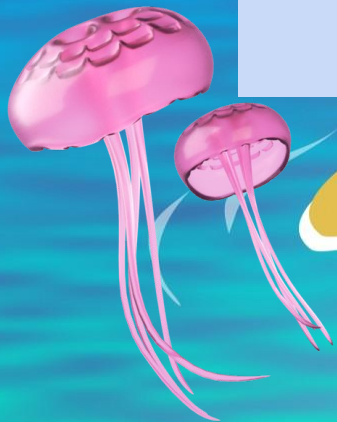
**Emails regarding invitations
for Interview:**
August 6
Interviews:
August 8-10

Acceptance calls:
August 15th



Ice Breaker

- 1) Name, Year, Major!
- 2) One Fun and One Boring Fact About Yourself!
- 3) If you could move to any part of the world, where would you go?



Volunteering



As a volunteer, we provide our patients emotional support and engage in conversation that help the patients feel more at home.

- 3 hour volunteer shifts
- mandatory Shands information session for Shands on August 24 from 2:00-4:00p, August 25 from 2:00-4:00p, and August 26 from 9:00-11:00a
- Will be volunteering in the ADTU as well as other floors of Shands and with Alz Place



Membership Activities



- General Body Member meeting biweekly on Thursdays at 6 in person
- New Member Retreat
- Families
- Bonding events:
 - Baseball Games
 - Valentine's Day Candy
 - Cookie Decorating
 - Buddy hangouts
- Point tracking system is how we keep track of member activity

Diversity and Inclusion



Wonderful Addition to our
General Body Meetings!

Workshops every general
body meeting to bring
attention to how diversity
and inclusion plays a role in
our everyday life

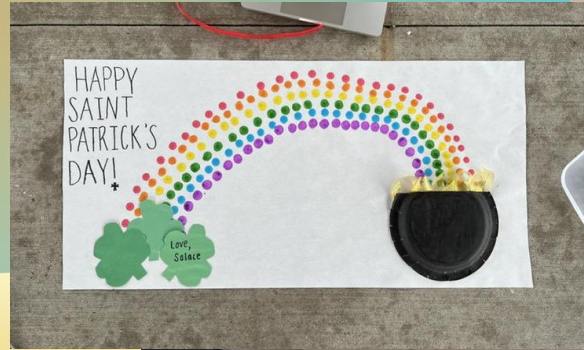


Crafts

We make crafts throughout the year to brighten up the hospital! Since the ADTU unit does not have any windows, these crafts are crucial to bringing color and light into the unit.

Some previous crafts:

- Hanging ghosts
- Holiday cards
- Mache butterflies
- Painted pumpkins
- Puzzles



Fundraising

Fundraisers very important to gain funds for craft materials, some member expenses like T-shirts and food at bonding events, and provisions for hospital

Some previous fundraisers:

- Chipotle
- Blaze
- Halo Potato
- Bento



Highlights and Memories



The background is a vibrant tropical scene. On the right, a palm tree with green fronds and a brown trunk stands on a sandy beach. The ocean is depicted with blue waves and white foam. The sky is a gradient of light blue and yellow. The text is centered over the scene.

OUR THEME:

Sea the World

Q & A



THANKS FOR COMING!

Application Information:

Open from July 19th
12:00AM to July 31st at
11:59 PM.

Open to UF students of any
major

Follow us on Social Media:

Instagram: @solaceatuf

Website:
<https://www.ufsolace.org/>

Facebook: @Solaceatuf

